



# **CARBON REDUCTION PLAN**

REPORTING YEAR: SEPTEMBER 2023 - AUGUST 2024  
ISSUE DATE: 28/02/2025

# Carbon Reduction Plan

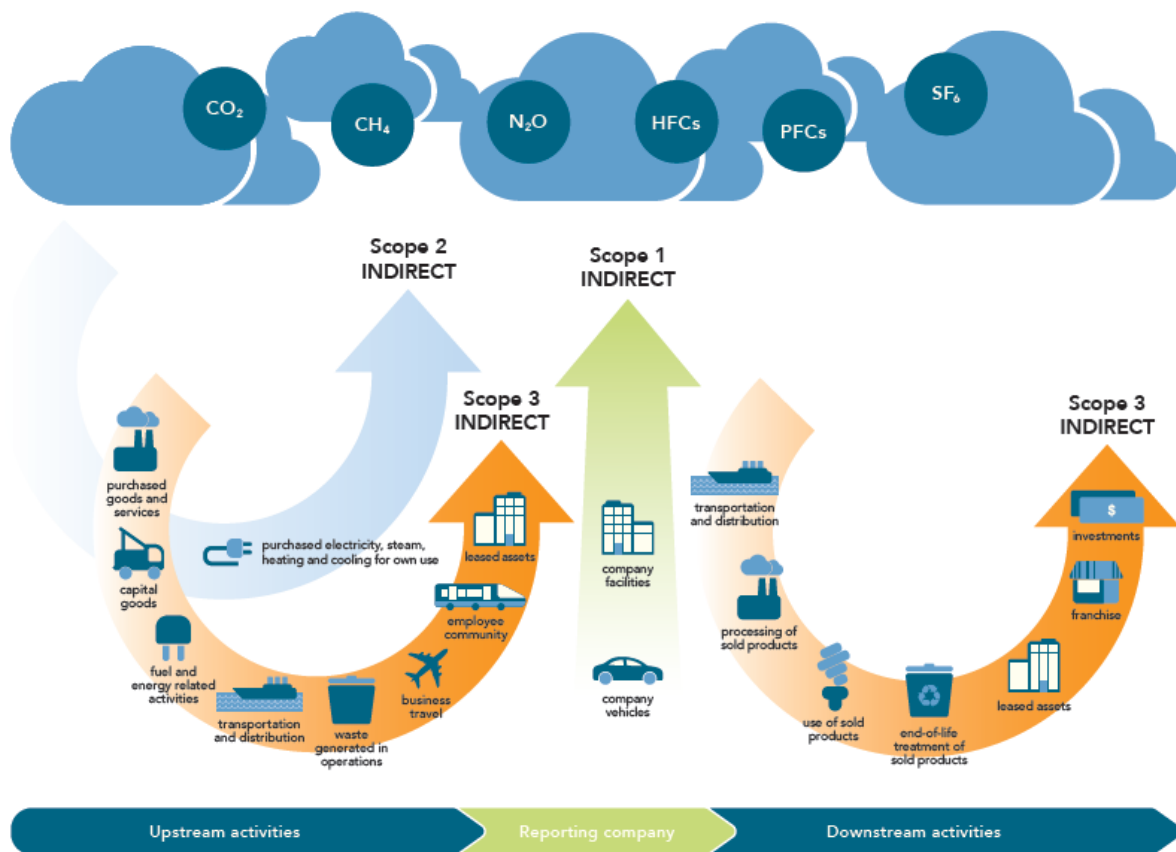
February 2025



## Commitment to achieving Net Zero

At MTX we are committed to decarbonising our economy. We recognise the urgency of the climate change agenda and we are putting it front and centre, as we strive to achieve a greener, more sustainable future.

We have made big advances on our carbon reduction journey since 2019 – and although our turnover has grown by 500% in that time, our overall carbon emissions for Scope 1, 2 per million of turnover has reduced by 85%.



|          |     |       |   |                 |                 |
|----------|-----|-------|---|-----------------|-----------------|
| Form No: | P13 | Issue | D | Approved by: DH | Date:28/02/2025 |
|----------|-----|-------|---|-----------------|-----------------|

# Carbon Reduction Plan

February 2025



## Baseline Emissions Footprint

Baseline emissions are a record of the greenhouse gases that have been produced in the past and were produced prior to the introduction of any strategies to reduce emissions. Baseline emissions are the reference point against which emissions reduction can be measured.

|   |                                 |
|---|---------------------------------|
| <b>Baseline Year: 2018-2019</b>   |                                 |
| <b>Additional Details relating to the Baseline Emissions calculations.</b>  |                                 |
| MTX Have an historic baseline for their 2018 financial year which deviates from the requirements of PPN 06/21 as it excludes Scope 3 emissions. |                                 |
| <b>Baseline year emissions:</b>   |                                 |
| <b>EMISSIONS</b>  | <b>TOTAL (tCO<sub>2</sub>e)</b> |
| Scope 1   | 218                             |
| Scope 2 (Market bases)  | 114.7                           |
| Scope 3   | Not assessed                    |
| <b>Total Emissions</b>  | <b>333.0</b>                    |
| <b>Scope 1 and 2 Emissions per £million turnover</b>  | <b>13.88</b>                    |
| <b>Scope 1 and 2 Emissions per employee</b>   | <b>9.25</b>                     |

|          |     |       |   |                 |                 |
|----------|-----|-------|---|-----------------|-----------------|
| Form No: | P13 | Issue | D | Approved by: DH | Date:28/02/2025 |
|----------|-----|-------|---|-----------------|-----------------|

# Carbon Reduction Plan

February 2025



## Current Emissions Reporting

| Reporting Year: 2023-2024  |                            |
|--|----------------------------|
| EMISSIONS  | TOTAL (tCO <sub>2</sub> e) |
| Scope 1  | 90                         |
| Scope 2 (Market based)   | 143                        |
| Scope 3<br>(Upstream and Downstream transportation, Waste, Business Travel and employee commuting) | 653                        |
| <b>Total Emissions</b>   | <b>887</b>                 |
| Scope 1 and 2 Emissions per £million turnover  | 1.8                        |
| Scope 1 and 2 Emissions per employee   | 3.48                       |

## Emissions reduction targets

In order to continue our progress to achieving Net Zero, we have adopted the following carbon reduction targets.

- 2032 - Achieve 80% reduction on our own operations (Scope 1, 2)
- 2040 - Achieve Net Zero on our own operations (Scope 1, 2)
- 2045 - Achieve Net Zero across all operations (Scope 1, 2 and 3)

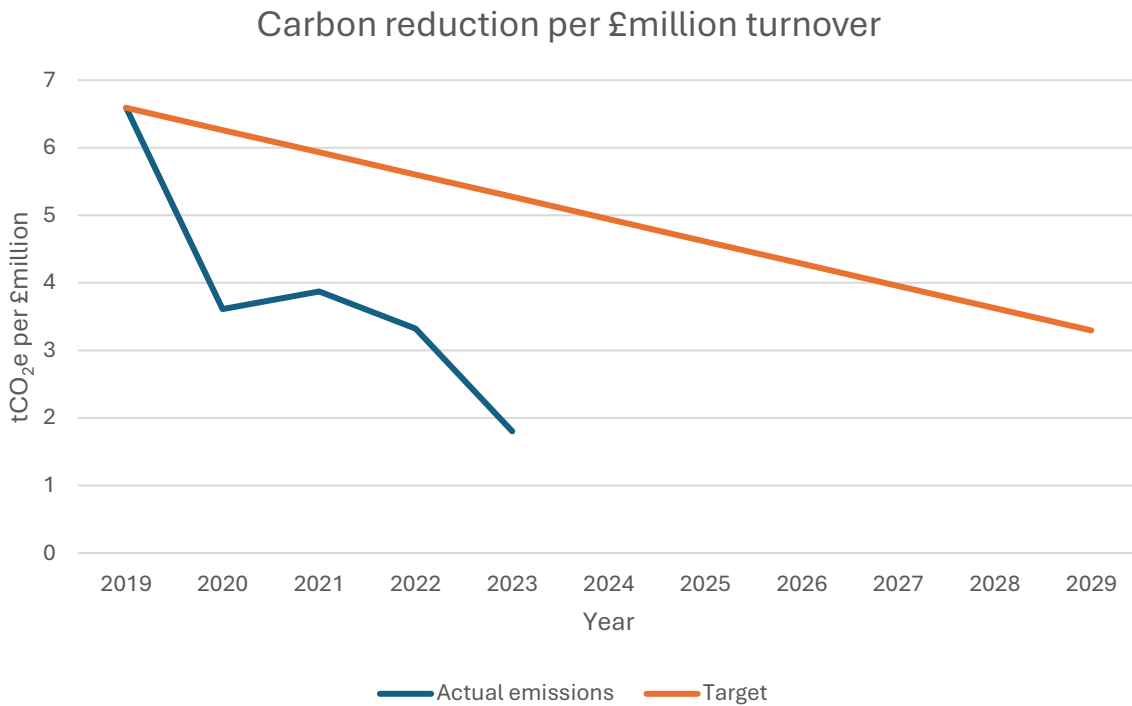
Our Scope 1 and 2 carbon emissions per million of turnover have decreased over the last 5 five years from 6.6 to 1.8tCO<sub>2</sub>e per million of turnover. This is a reduction off 73% from our 2019 baseline.

Progress against these targets can be seen in the graph below:

|          |     |       |   |                 |                 |
|----------|-----|-------|---|-----------------|-----------------|
| Form No: | P13 | Issue | D | Approved by: DH | Date:28/02/2025 |
|----------|-----|-------|---|-----------------|-----------------|

# Carbon Reduction Plan

February 2025



## Carbon Reduction Projects

### Completed Carbon Reduction Initiatives

The following environmental management measures and projects have been completed or implemented since the 2019 (scope 1 and 2) and 2022 (scope 3) baselines. The carbon emission reduction achieved by these schemes equate to 8.2 tCO<sub>2</sub>e per million of turnover and the measures will be in effect when performing the contract.

- We have invested in a solar array for our head office, we predict this will produce 10% of our yearly electricity demand for the site and reduce our scope 2 footprint.
- The First Electric Vehicle charging point was installed in January 2020 and since then our capacity has increased to five points.
- As of August 24, we have 50 company vehicles, of which 16 are full electric and 10 are hybrids.
- EV or PHEV-only company car policy introduced for all non-commercial vehicles
- Minimised use of diesel generators by making early grid connections on our construction sites.
- Decreased on-site fuel use through the greater use of non-fossil fuel-powered plant/equipment (e.g. power cubes/hybrid power systems), where early grid connections cannot be made.

|          |     |       |   |                 |                 |
|----------|-----|-------|---|-----------------|-----------------|
| Form No: | P13 | Issue | D | Approved by: DH | Date:28/02/2025 |
|----------|-----|-------|---|-----------------|-----------------|

# Carbon Reduction Plan

February 2025



- Energy-efficient welfare and site office cabins used as well as LED/solar/hybrid lighting systems.
- Agile Working policy in operation to maximise the use of technology such as Microsoft Teams to reduce travel and improve work-life balance.
- Third-party certification to ISO 14001:2015 achieved and maintained; consequently, all activities are subject to defined environmental management standards applicable across all of our business activities.

In the future we hope to implement further measures such as:

- Achieving adequate and effective science-based targets in conjunction with the Science-Based Targets Initiative (SBTi).
- Harnessing and developing our work around Building Information Modelling (BIM) systems and digitalisation in general to design more low-carbon (embodied and operational) buildings and infrastructure and leverage more carbon-efficient modern methods of construction.
- Investing in even more research, which will allow us to benchmark and provide solutions to our clients that reduce both operational and embodied carbon.
- Targeting and reducing on-site diesel emissions:
  - Establishing more efficient methods of collecting on-site diesel use data.
  - Making on-site grid connection a priority.
  - Increased use of electric plant (in line with technological developments).
  - Maximised use of Eco-rated site accommodation and welfare cabins.
  - Committing to more off-site manufacturing
- Reducing vehicle fleet emissions:
  - Installing EV charging points in all our permanent office locations.
  - Monitoring opportunities to electrify our commercial vehicles fleet.
  - Continuing to support agile and remote working to minimise unnecessary travel.
- Reducing non-renewable energy emissions:
  - Maximised use of Eco-rated site accommodation and welfare cabins.
  - Mandated on-site use of existing renewable energy broker arrangements.
- Reducing Scope 3 building and infrastructure emissions associated with embodied carbon and operational carbon:
  - As emissions data becomes more available, expanding our reporting boundaries to include all relevant Scope 3 Categories, as defined by the Greenhouse Gas Protocol.

|          |     |       |   |                 |                 |
|----------|-----|-------|---|-----------------|-----------------|
| Form No: | P13 | Issue | D | Approved by: DH | Date:28/02/2025 |
|----------|-----|-------|---|-----------------|-----------------|

# Carbon Reduction Plan

February 2025



- Developing a Carbon Toolkit to improve our ability to model the embodied and operational carbon associated with the buildings and infrastructure that we design and construct.
- Investing in and improving our approach to carbon reduction through pilot studies monitoring real world embodied and operational carbon.
- Identifying and adopting the use of low carbon construction plant, materials and working practices through engagement with our supply chain.
- Actively participating as a Business Champion and supporting the achievement of the CLC’s CO2nstruct Zero framework and priorities.
- Achieving PAS 2080 Carbon Management in Infrastructure verification.
- Providing further training and development in the design and construction of low carbon buildings and infrastructure to our people and supply chain partners.

## Declaration and Sign Off

This Carbon Reduction Plan has been completed in accordance with PPN 06/21 and associated guidance and reporting standard for Carbon Reduction Plans is based on an assessment provided by third party consultants, ‘Nature Positive Ltd’.

Emissions have been reported and recorded in accordance with the published reporting standard for Carbon Reduction Plans and the GHG Reporting Protocol corporate standard<sup>1</sup> and uses the appropriate Government emission conversion factors for greenhouse gas company reporting<sup>2</sup>.

Scope 1 and Scope 2 emissions have been reported in accordance with SECR requirements, and the required subset of Scope 3 emissions have been reported in accordance with the published reporting standard for Carbon Reduction Plans and the Corporate Value Chain (Scope 3) Standard<sup>3</sup>.

This Carbon Reduction Plan has been reviewed and signed off by the board of directors (or equivalent management body).

Signed on behalf of MTX Contracts

|   |                                  |
|---|----------------------------------|
|  | David Hartley, Managing Director |
|---|----------------------------------|

Date: 28/02/2025

<sup>1</sup><https://ghgprotocol.org/corporate-standard>

<sup>2</sup><https://www.gov.uk/government/collections/government-conversion-factors-for-company-reporting>

<sup>3</sup><https://ghgprotocol.org/standards/scope-3-standard>

|          |     |       |   |                 |                 |
|----------|-----|-------|---|-----------------|-----------------|
| Form No: | P13 | Issue | D | Approved by: DH | Date:28/02/2025 |
|----------|-----|-------|---|-----------------|-----------------|